

Bonding Trust

Rashi Cellulose Chem





ABOUT OUR COMPANY

Rashi Cellulose Chem is a leading player in the field of Sodium Carboxyl Methyl Cellulose (CMC) powder manufacturing.

With a strong commitment to quality and innovation, we have established ourselves as a reliable partner for industries worldwide.

Our state-of-the-art manufacturing facility in Jalgaon enables us to deliver top-notch CMC products that cater to diverse industrial needs.

www.rashicellulose.com

OUR EXPERIENCE



Our team has a collective experience of more than 25+ years. With over 32 years of batch operation experience, 22 years of lab technician proficiency, and 18 years of Distillation operation mastery. Our experienced team fuels our commitment to excellence and ensures that each product is a proof to our expertise and dedication

Our Products



Our Mother Products “Sodium CMC”

We have Five grades of Sodium CMC

- 1) LVP
- 2) MVP
- 3) HVP
- 4) DVP
- 5) DVP SPECIAL

We Classified Sodium CMC in

- 1) Pharmaceutical Grade
- 2) Super Technical Grade
- 3) Technical Grade

Applications of CMC

Pharmaceuticals (RCC-PH)

Sodium CMC is one of the pharmaceuticals excipients that can be used to increase viscosity in topical, oral and parental formulation. It also used as binder and disintegrater in tablet formulation.

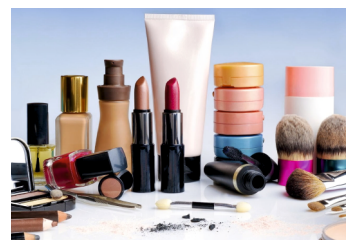


Paints (RCC-P)

Sodium CMC used as thickener, binder, Film Former and suspending agents, It improves brushing performance of Paints and Restrict crystalline growth of Fillers. It used in water soluble paints, emulsion paints and in dry oil bound distemper.

Cosmetics (RCC-C)

Sodium CMC stops lotions and cream from separating and controls the thickness and texture of liquids, creams and Gels.



Food & Beverages (RCC-FB)

Sodium CMC is widely used in food product to absorb and hold water, to control crystal growth to thicken as a binder and to increase the shelf life of products. It is also a strong acid resistance and high salt resistance with very few free fibres.

Oral Care (Toothpaste) (RCC-T)

Sodium CMC play the part of adhesion and moulding. It stabilize the quality of the toothpaste through out.



Detergents (RCC-D)

Sodium CMC is used in detergents as an anti soil redeposition agents, particles suspender, skin protector, colour retention, stabilizer, homogenizer, texture protector.

Oil & Gas Drilling (RCC-OG)

Sodium CMC play a role of resisting water loss and increase adhesion, so as to protecting the wall of oil well, prevent slurry erosion, take way Drill crumbs. increase the drilling speed.



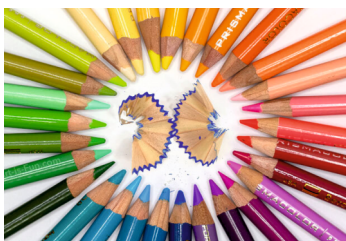


Paper Industry (RCC-PI)

Sodium CMC used as a sizing agent & thickening agent for printing and Dyeing paste also for textile printing and stiffening treatment.

Textiles (RCC-T)

Sodium CMC used as a sizing agent & thickening agent for printing and Dyeing, paste also used for textile printing and stiffening treatment.



Pencils (RCC-PS)

Sodium CMC acts as binding agents and moulding performance improvement agent.

Ceramics (RCC-CS)

Sodium CMC used as additive in ceramic industry, It also act as slurry Dispersive, de-agglomeration, suspension, adhesion and water retention. It has become an important auxiliary material in the production of ceramics.



Pesticides (RCC-PT)

Sodium CMC used to entrap the insects or the spiracles of the tracheal system.

Rashi Cellulose Chem

For More Details
Scan QR Code



📍 Plot No. K-41, MIDC, Industrial Area,
Jalgaon (MH) - 425003

✉️ rashicellulosechem@gmail.com

Rajesh D. Savakare 📞 9326146214

Mahesh V. Jaiswal 📞 9923659105